

Middleback Theatre – Whyalla

TECHNICAL FACILITIES



Government
of South Australia

country..
arts sa

141a Nicolson Avenue, PO Box 640 Whyalla, SA 5600

Box Office: (08) 8644 7300, Fax: (08) 8644 7399

Email: middleback@countryarts.org.au / Web: www.countryarts.org.au

Manager: Ryan Sutherland, Technical Manager: Paul Travers
Updated May 2013

Seats

TOTAL SEATING – Maximum Capacity does not take into account Accessible Seating Area. Accessible seating area setup Maximum seating 467 (see seating map attached)	478
Total possible seating with thrust stage or orchestra pit in use - minus 21 seats	457
Total possible seating with sound desk placed in auditorium – minus 16 seats	458

The theatre can cater for up to 7 wheelchair seats

Country Arts SA reserves the right to withdraw from sale for any performance, a maximum of 8 seats.

Therefore above capacities may reduce by 8.

Proscenium

Width	12.9m
Height	6.40m

False Proscenium

Width and side masking normally set at	10.8m
Height maximum	6.40m
Height minimum	4.50m

Stage

Depth	10.88m
Stage front curtain line	1.10m
Curtain line to rear wall	11.01m
Forestage front to curtain line	3.60m
Extent of timber stage (width)	16.70m
Width OP stage wing (inc.dip trap)	2.30m
Width PS stage wing (inc.dip.trap)	1.57m
Height to under side of grid	16.40m
To under side of fly gallery	6.40m
Above front row of auditorium	1.0m

Stage Surface

Unraked timber stage Masonite covered Sprung on concrete base Standard Colour - Black
--

Orchestra Pit

Trilateral Pit Lift
10.5m wide at stage edge, 6.5m at auditorium edge, 2.5m deep at centre
Lowers to 1m below stage at auditorium level
Lowers to (approx) 2.3m below stage to Orchestra Pit
Capacity (approx) 14 persons (Access from auditorium only)
At stage level as Thrust Stage

Scene Dock Area

Dock doors allows end loading with direct access for transport from side street Hydraulic lift at road level for lifting and lowering of equipment.	2.65m high x 2.17m wide
--	-------------------------

Middleback Theatre – Technical Facilities

Stage Drapes	2 sets black travellers	
	4 pair blacklegs	8m high x 3.3m wide
	4 borders	3.5m high x 15.6m wide
	1 cyclorama white	7.7m high x 15.6m wide

Rehearsal Area/Green Room	Approximately 8.5m x 6.5m Available for rehearsal space and resting area.
----------------------------------	--

Wardrobe (Work Room)	1 Fixed wall ironing board
	1 portable ironing board
	1 iron
	1 automatic front loading machine
	1 front load tumble drier
	1 upright drier
	4 large portable wardrobe racks
	2 small portable wardrobe racks

Dressing Rooms	Number	Capacity	Amenities
	1	20	Shower and toilet
	2	20	Shower and toilet
	3	4	Shower and toilet
	4	4	Shower and toilet

Lecturn	One
----------------	-----

Music Stands	13 x Music Stands with Light
	1 Conductor's music stand with light

Pianos	1 Yamaha C7 Grand Piano
	1 Yamaha Upright

Rostra	7 each of 6' x 4' (1830 x 1220) in heights
	6" (152mm)
	1' (304mm)
	1'6" (456mm)
	2' (608mm)
	2'6" (762mm)
	3' (914mm)

Steps: 2 x 3' (914mm) high
4 x 2' (608mm) high
2 x 1' (304mm) high
Step available from stage/auditorium located in centre of stage only 1000mm high x 1200 wide

Machinery	45 Single Purchase 5 Line Counter Weight Sets	
	Manual Operation – Stage Level Prompt Side	
	Barrel Length	15.6m
	Pipe Outside Diameter	48mm
	House Curtain	Fly Manual
	French Action	Motor Driven
	Black Stage Tabs (x2)	Manual Close and Draw

Elevated Work Platform	The theatre is fitted with a JLG model 20DVL elevated work platform to assist in rigging and focussing equipment above stage. The platform will elevate to 5.94 meters above stage level. Persons wishing to use this platform must produce their yellow Operator Training card as issued by the Elevating Work Platform Association of Australia as proof of training, before commencing work on the platform.
-------------------------------	---

Lighting Equipment

Lighting Control System	ETC Express lighting Desk with multiple chase/cue sequences	
	96 control channels	
	192 circuits patch panel	
	24 x 5-KVA LSC TEKO Dimmers	
DMX Distribution All Cat5 via 2 x LSC 10-way splitters and RJ45 patch bay	72 x 2.5-KVA LSC TEKO Dimmers	
	<u>2 streams(A & B) with 5 pin XLR outlet positions</u> PS LX Bridge 1. PS LX Bridge 2 PS DS(SM Position) OP DS PS Stage Gallery 4 outlets OP Stage Gallery 1 outlet (for LX bars) <u>DMX Inputs:</u> Control Room & SM Position	
Lighting Positions	<u>5 x On-Stage lighting bars</u> 4 x LX Bars 1 x Cyc LX units 2 x FOH Lighting Bridges 8 x Portable side booms	
Spot & Floodlight Lanterns	2	Selecon Performer Rua 9-16 deg followspots
	48	CCT 15 Degree 1kw silhouette profiles
	24	CCT 1kw starlette fresnels
	16	CCT 2kw pebble convex
	20	CCT 650w minuette zoom profiles
	12	CCT 650w minuette TT profiles
	8	CCT 650w minuette fresnels
	5	Quartscolour iris 4 units
	5	Quartscolour pallas 4 units
Power	1	32A – 3 Phase outlet prompt upstage corner
	1	32A – 3 Phase outlet in scene dock area 10m from OP upstage corner

Sound Equipment

Desks (Digital)	1 Roland RSS M-400 48 channel sound mixer	
	48 mic/line input with phantom power, stereo programme out left, right and centre, + 4 auxiliary sends Full specs: http://www.roland.com/products.en.M-400/specs.html	
Desk (Analogue)	Soundcraft GB4	
Stage Box	Roland S-4000 Digital Snake 32 Inputs / 8 Outputs Modular Full Specs: http://www.roland.com/products/en/S-4000S-3208/specs.html	
Amplifiers	1 x	Yamaha P2002M Amplifier* for Subwoofers
	2 x	Jeil JMA-900 Amplifiers for fallback
Foldback Speakers	1 x	Crown XLS602 Amplifier for FOH driven from dbx Driverack EQ
	4 x	Electro-Voice TL 12/2 Foldback Speakers
Speakers FOH	4 x	JBL AC2215/64 & AC2215/95 (1 of each fitted per side of proscenium)
	2x	Bose 502 Subwoofers
Play/Rec Equipment		
	2 x	Denon DNC 680 professional CD players
	2 x	Denon cassette tape recorders
	2 x	Denon Compact Disc player model
Special Effects Rack	1 x	dbx 1231 twin 1/3 Octave Graphic Equalisers* (for F/B)
	1 x	Yamaha D1500 Digital Delay*
Microphones	6 x	AKG D330 microphones
	4 x	Electro-Voice RE45N/D Shotgun microphones
	4x	Shure Beta 58A microphones
	6x	Shure SM58 microphones
	6x	Shure KSM109 Cardoid condenser instrument microphone
	4x	Shure MX393/0 Omnidirectional condenser boundary microphones
	6x	Shure EZO/G Easyflex overhead microphones
	1x	Shure SM58 hand held radio microphone
	2 x	Audio Spectrum hand held radio microphones
	4x	MIPRO wireless microphones & head sets
	DI Boxes	4x
2 x		Jands direct input boxes
Stands	20 x	Microphone stands various sizes with boom arms

Projection Equipment

Cinema Projection Equipment

Christie CP2200 DLP Projectors – Has Gefin Scaler attached will take DVI/HDMI Component & Composite (AV) inputs Is Configured for Cinema Screen or Cyc use

3D System

RealD only on Cinema Screen

Sound

Installed QSC 5.1 or 7.1 Surround Sound

Audio Visual

1 Overhead Projector
1 Cinema Screen Fixed at line number 11 clearance when flown 8200
1 Rear Projection Screen at line number 23 clearance flown 7300mm plus extra 2100mm for soft bottom masking
1 Mitsubishi data projector FL7000U*
Rextron VGA / CAT5 Extender from stage to control room
* NOT REMOVABLE FROM CONTROL ROOM

Stage Management System

Console. Mounted stage left (prompt side) with head control set talk back from outstations

Stage sound relay and cast call system

Audio talk back cueing systems to all production outstations.

Plug in head sets available at followspot, control room, lighting bridges, fly gallery and backstage.

Cast call and stage sound relay to all dressing rooms and cast assembly areas.

Warning bell system to foyer and public areas controlled by front of house manager.

Middleback Theatre Hanging Plot

Line	Distance from	Description	New Allocation
0	450	House Curtain	Cannot be moved to another line
1	750	False Proscenium Teaser	Cannot be moved to another line
2	900	False Proscenium Tormentor	Cannot be moved to another line
3	1050	Spare	
4	1200	Line not fitted	
5	1350	LX 1	
6	1500	Line not fitted	
7	1650	Spare	
8	1800	Spare	
9	1950	Spare	
10	2100	No 1 Border	
11	2250	Cinema Screen (fixed)	Cannot be moved to another line
12	2400	No 1 Legs	
13	2550	Spare	
14	2700	Line not fitted	
15	2850	LX 2	
16	3000	Line not fitted	
17	3150	Spare	
18	3300	Spare	
19	3450	Spare	
20	3600	Spare	
		150mm gap	
21	3950	Line not fitted	
22	4050	No 2 Border	
23	4200	Rear Projection Screen	Cannot be moved to another line
24	4350	No 2 Legs	
25	4500	Line not fitted	
26	4650	LX 3	
27	4800	Line not fitted	
28	4950	Spare	
29	5100	Spare	
30	5250	Spare	
31	5400	Spare	
32	5550	Line not fitted	
33	5700	Spare	
34	5850	Spare	
35	6000	No 1 Tabs	
36	6150	Spare	
37	6300	No 3 Border	
38	6450	Line not fitted	
39	6600	No 3 Legs	
40	6750	Spare	
41	6900	Line not fitted	
42	7050	LX 4	
43	7200	Line not fitted	
44	7350	Spare	
45	7500	Spare	
		150mm gap	
46	7800	Line not fitted	
47	7950	Spare	
48	8100	No 4 Border	
49	8250	No 4 Legs	
50	8400	Line not fitted	
51	8550	Line not fitted	
52	8700	Cyc Flood Bar (Iris 4)	
53	8850	Line not fitted	
54	9000	Line not fitted	
55	9150	Spare	
56	9300	No 2 Tabs	
57	9450	Spare	
58	9600	Spare	

Middleback Theatre – Technical Facilities

59	9750	PS Side Barrel	
60	9900	OP Side Barrel	
61	10050	Cyclorama	

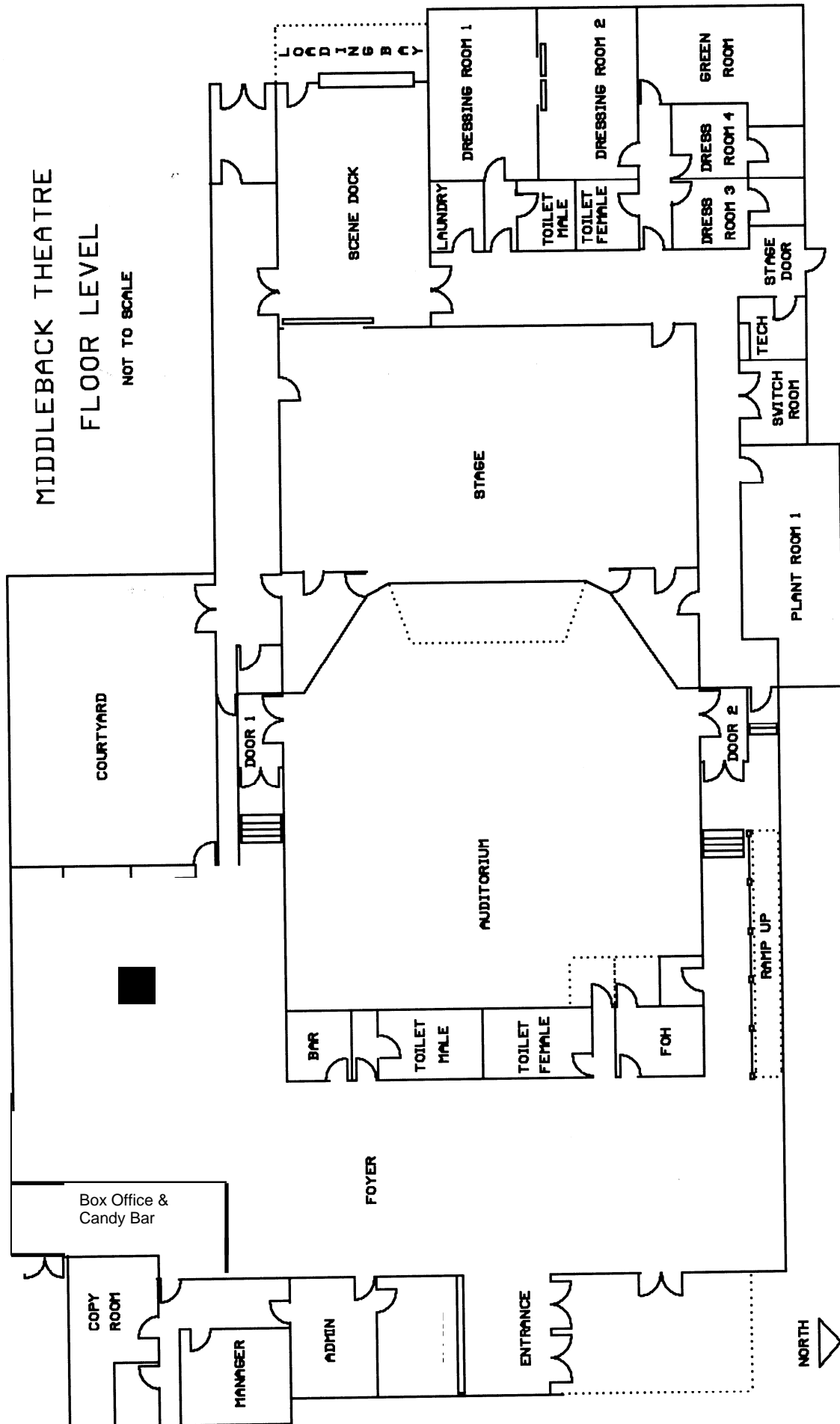
Standard Rig

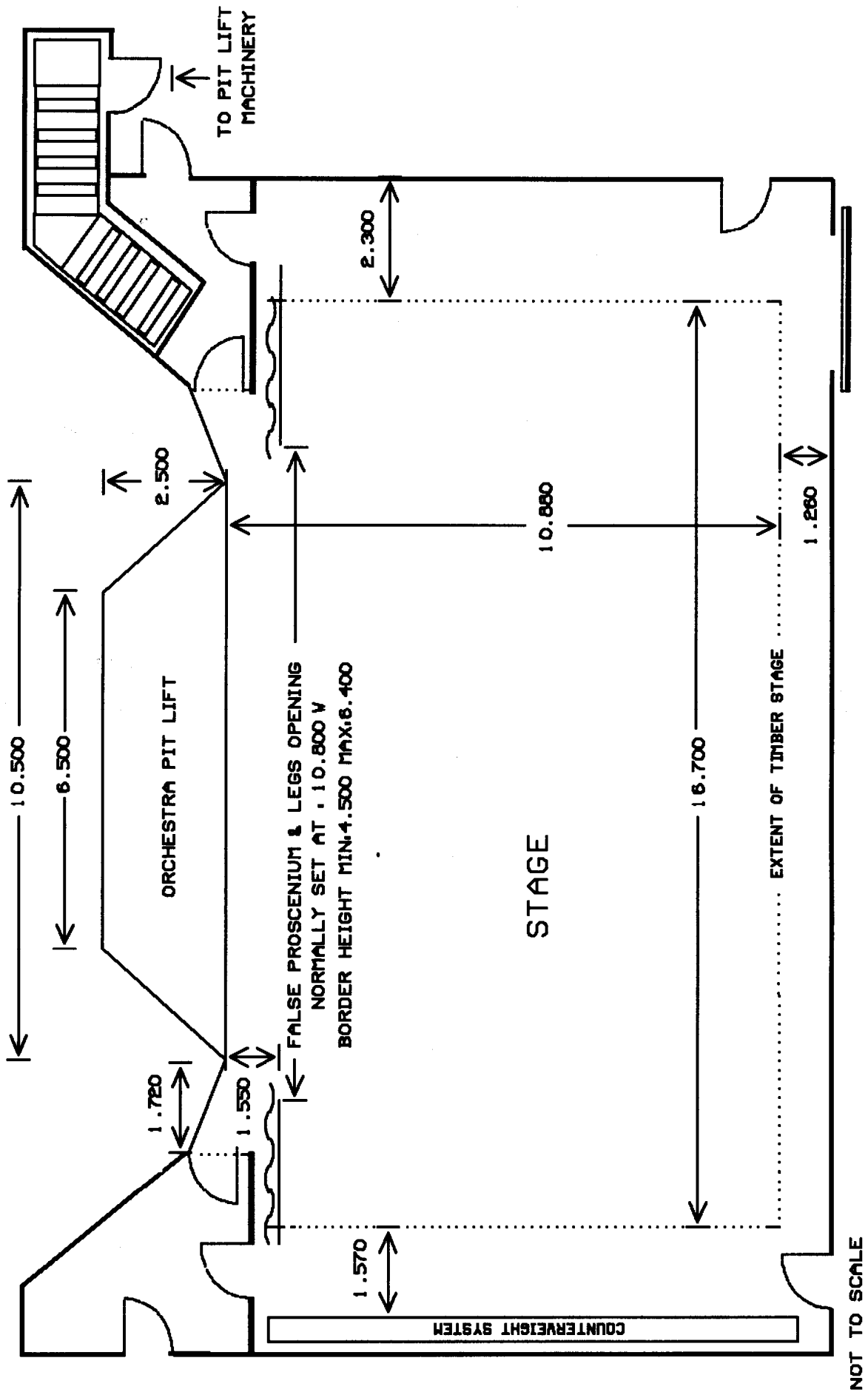
The theatre is hired in a standard configuration for lighting, sound and fly lines. This includes the lighting rig standard colours (red, blue, amber and o/w); the stage apron at auditorium floor level with seats in; stage floor colour - theatre grey; stage clean clear and tidy. Any variation to the standard configuration will be made at the hirer's expense and returned to the standard configuration at the hirers expense. The theatre must be informed in writing at least four weeks prior to the bump in of any change you wish to make to the standard rig.

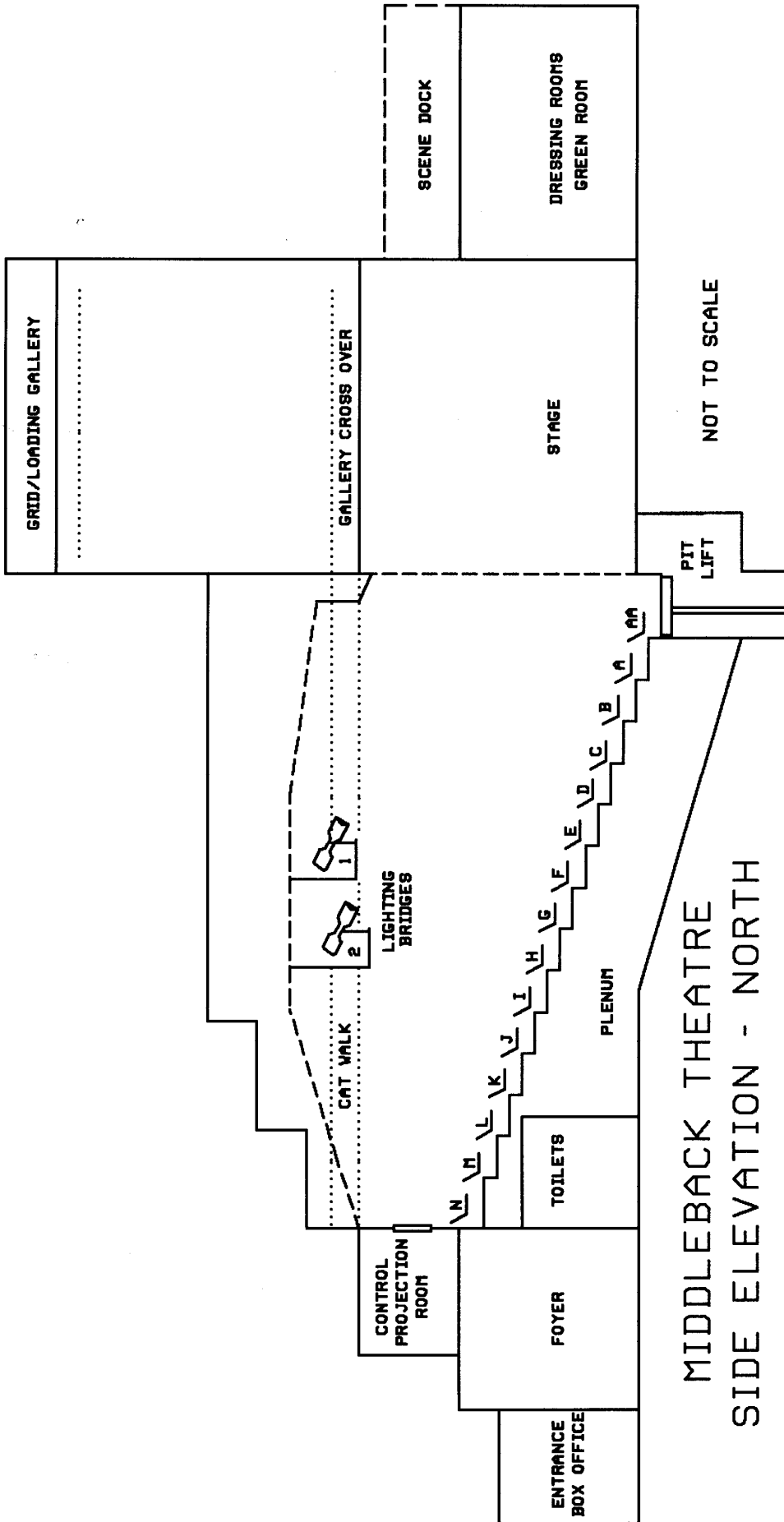
Theatre Usage Guidelines

- Alterations to the structure and fittings of the theatre are prohibited (including painting and drilling of holes into the stage floor). No painting of scenery or equipment is permitted on stage. Glitter may not be used on scenery or costumes.
- Lighting and sound desks to be operated by Country Arts SA staff or persons approved by Country Arts SA by prior arrangement only. The Public Health Authority has set a maximum sound level limit of 105 decibels. Country Arts SA has the authority to enforce this ruling.
- The use of pyrotechnics, smoke machines or naked flames (other than dry ice), will only be permitted with the appropriate South Australian licences, and in the presence of a representative of the South Australian Metropolitan Fire Service which will be at the hirer's expense. No flammable liquids or explosive material may be brought into the premises.
- All rigging of scenery, lighting etc. must comply with Occupational Health, Safety and Welfare Regulations, and Department of Industrial Relations Regulations. Country Arts SA may refuse the use of any scenery, lighting, sound or other equipment. Counterweight flying system is not to be used by persons under the age of eighteen years and only by persons approved by Country Arts SA by prior arrangement.
- Smoking in the theatre is prohibited other than on stage as part of the performance by prior arrangement. No alcohol shall be brought into the premises, other than by prior arrangement. No foodstuffs or liquids may be taken onto the stage, other than as part of the performance by prior arrangement.
- Corridors surrounding the stage must be kept totally clear of all props and scenery at all times. All performers and backstage crew are to enter the theatre via the stage door. Access is not permitted via the theatre foyer. No persons, other than members of the production crew will be permitted in the auditorium and foyer areas during rehearsals.
- The Theatre is fitted with JLG model 20DVL elevated work platforms to assist in rigging and focussing equipment above the stages. The platforms will elevate to 20 feet above stage level (25 foot max working height). People wishing to use these platforms must produce their yellow Operator Training card as issued by the Elevating Work Platform Association of Australia as proof of training, before commencing work on these platforms.

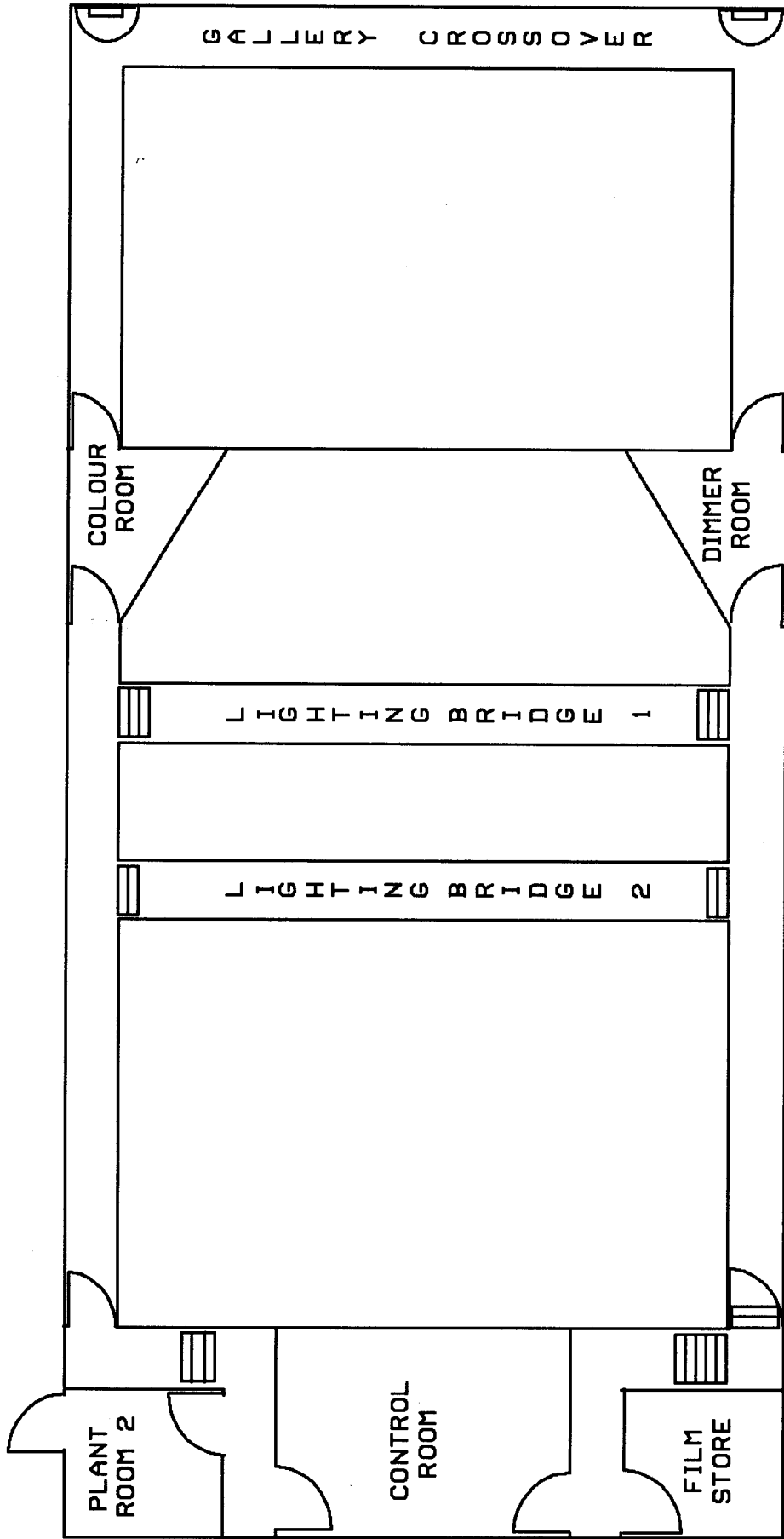
For technical advice contact Technical Manager Paul Travers 0401 125 896



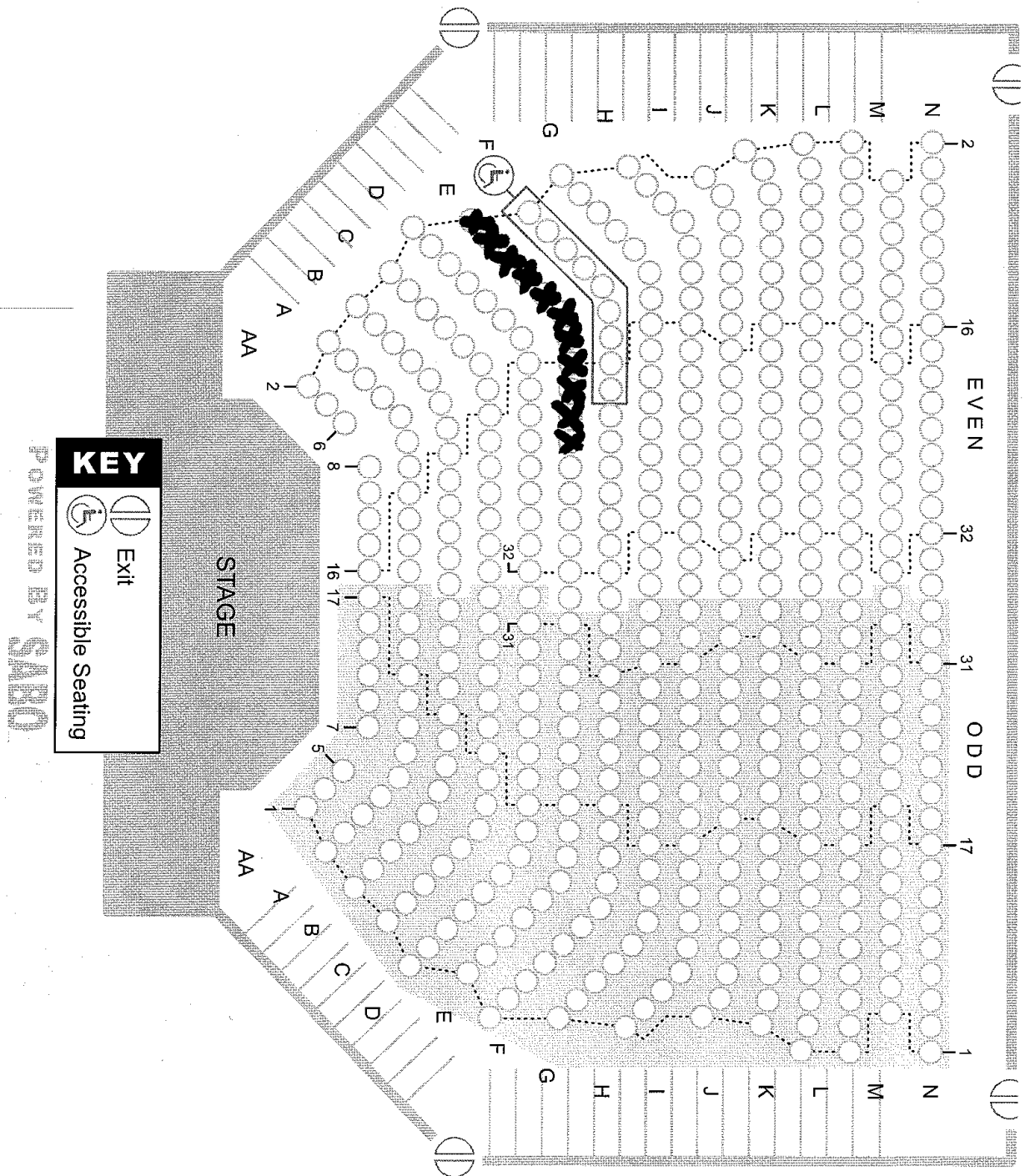




MIDDLEBACK THEATRE
SIDE ELEVATION - NORTH

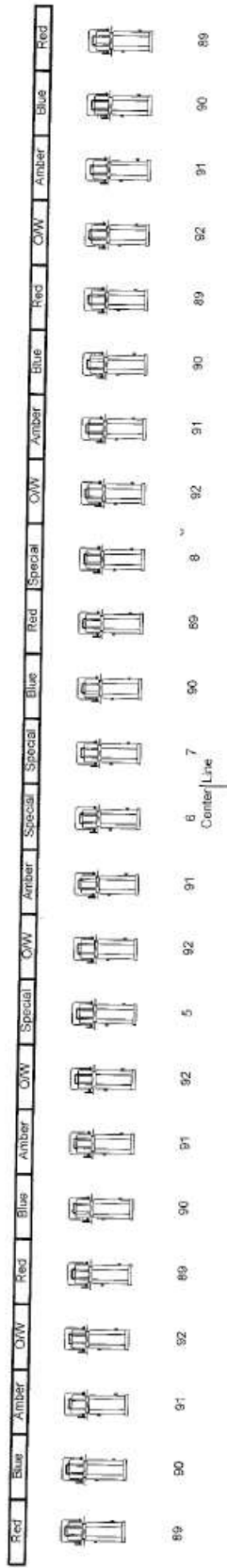


MIDDLEBACK THEATRE GALLERY LEVEL
NOT TO SCALE

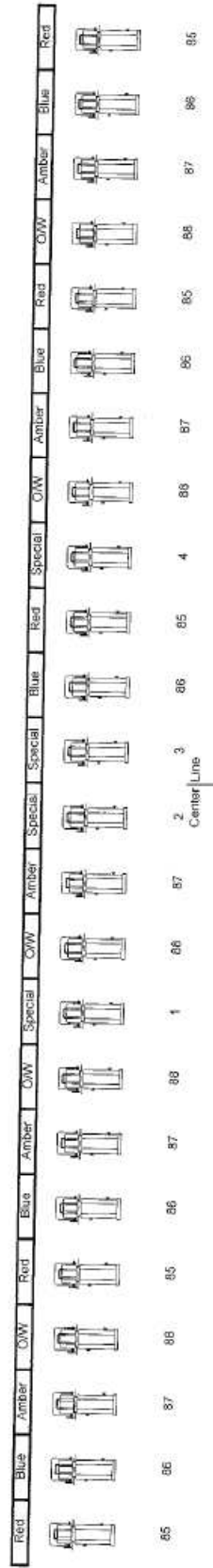


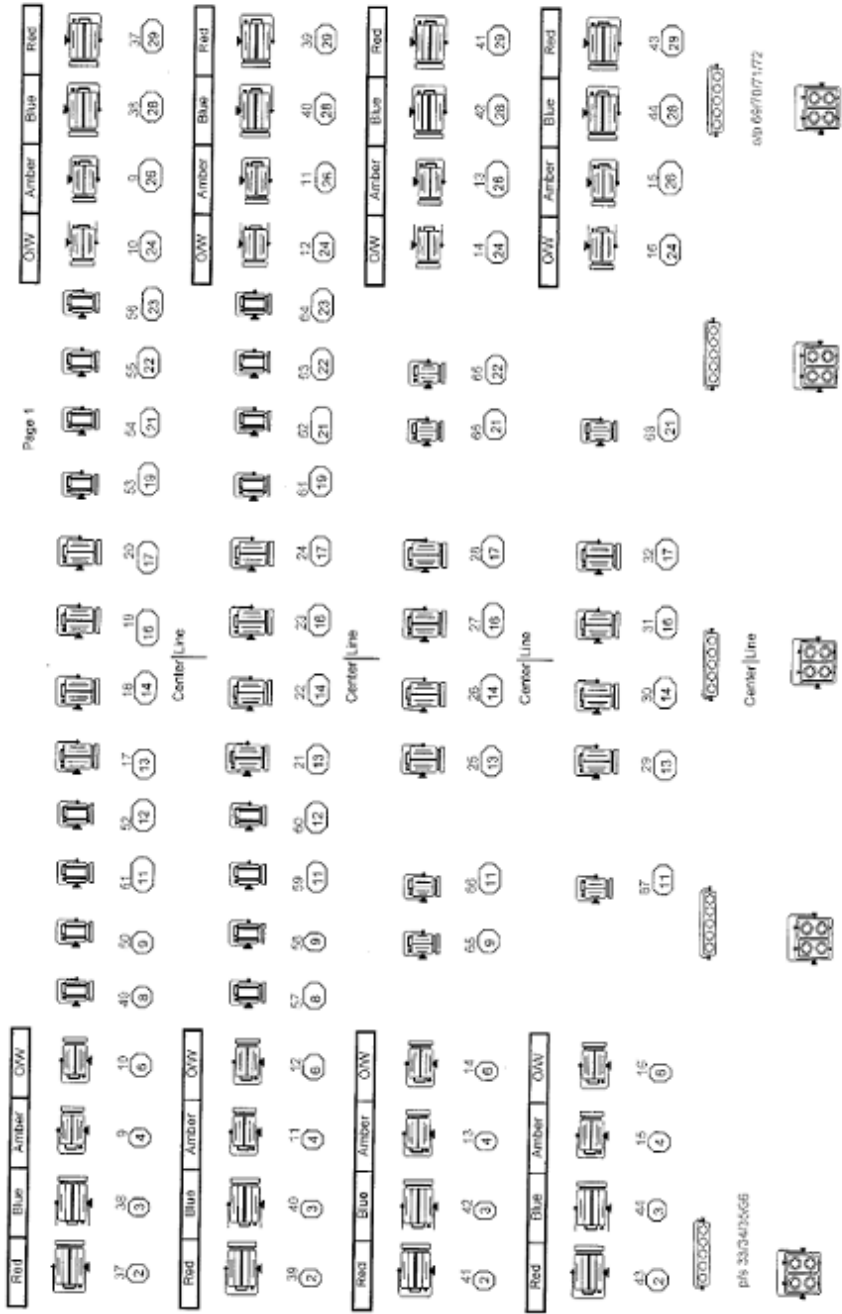
DIMMER	CCT 1	CCT 2	CCT 3	CCT 4	CCT 5	DESCRIPTION	DIMMER	CCT 1	CCT 2	CCT 3	CCT 4	CCT 5	DESCRIPTION
1	41					Br1 Spec	54	125					Lx1 Min
2	44					Br1 Spec	55	126					Lx1 Min
3	47					Br1 Spec	56	127					Lx1 Min
4	50					Br1 Spec	57	136					Lx2 Min
5	11					Br2 Spec	58	137					Lx2 Min
6	14					Br2 Spec	59	138					Lx2 Min
7	17					Br2 Spec	60	139					Lx2 Min
8	20					Br2 Spec	61	144					Lx2 Min
9	114					Lx1 Amber	62	145					Lx2 Min
10	115					Lx1 O/W	63	146					Lx2 Min
11	134					Lx2 Amber	64	128					Lx2 Min
12	135					Lx2 O/W	65	151					Lx3 Min
13	149					Lx3 Amber	66	152					Lx3 Min
14	150					Lx3 O/W	67	109					Lx4 Min
15	107	159				Lx4 Amber	68	161					Lx4 Min
16	108	160				Lx4 O/W	69	188					Gnd Row O/P
17	120					Lx1 Spec Frsnl	70	189					Gnd Row O/P
18	121					Lx1 Spec Frsnl	71	190					Gnd Row O/P
19	122					Lx1 Spec Frsnl	72	191					Gnd Row O/P
20	123					Lx1 Spec Frsnl	73						
21	140					Lx2 Spec Frsnl	74						
22	141					Lx2 Spec Frsnl	75						
23	142					Lx2 Spec Frsnl	76						
24	143					Lx2 Spec Frsnl	77						
25	153					Lx3 Spec Frsnl	78						
26	154					Lx3 Spec Frsnl	79						
27	155					Lx3 Spec Frsnl	80						
28	156					Lx3 Spec Frsnl	81						
29	111					Lx4 Spec Frsnl	82						
30	110					Lx4 Spec Frsnl	83						
31	163					Lx4 Spec Frsnl	84	35	56				Curt warmers
32	162					Lx4 Spec Frsnl	85	32	37	49	54	59	Br1 Red
33	176					Gnd row promt	86	33	38	48	53	58	Br1 Blue
34	177					Gnd row promt	87	34	39	43	52	57	Br1 Amber
35	178					Gnd row promt	88	36	40	42	51	55	Br1 O/W
36	179					Gnd row promt	89	2	7	19	24	29	Br2 Red
37	112					Lx1 Red	90	3	8	18	23	28	Br2 Blue
38	113					Lx1 Blue	91	4	9	13	22	27	Br2 Amber
39	132					Lx2 Red	92	5	10	12	21	26	Br2 O/W
40	133					Lx2 Blue	93	164					Cyc
41	147					Lx3 Red	94	165					Cyc
42	148					Lx3 Blue	95	166					Cyc
43	105	157				Lx4 Red	96	167					Cyc
44	106	158				Lx4 Blue							
45													
46													
47													
48													
49	116					Lx1 Min							
50	117					Lx1 Min							
51	118					Lx1 Min							
52	119					Lx1 Min							
53	124					Lx1 Min							

Bridge 2



Bridge 1





COUNTY #HS 84
**Middleback
 Theatre**
 Whyalla S.A.
 Stage Std Rig

Legend

	2Kw Pebble Convex		Minuette 650 zoom
	1Kw Starlette		Ground Row
	Cycrama		15'1Kw Silhouette
	Minuette TT 650		Dimmer Channel Bar No